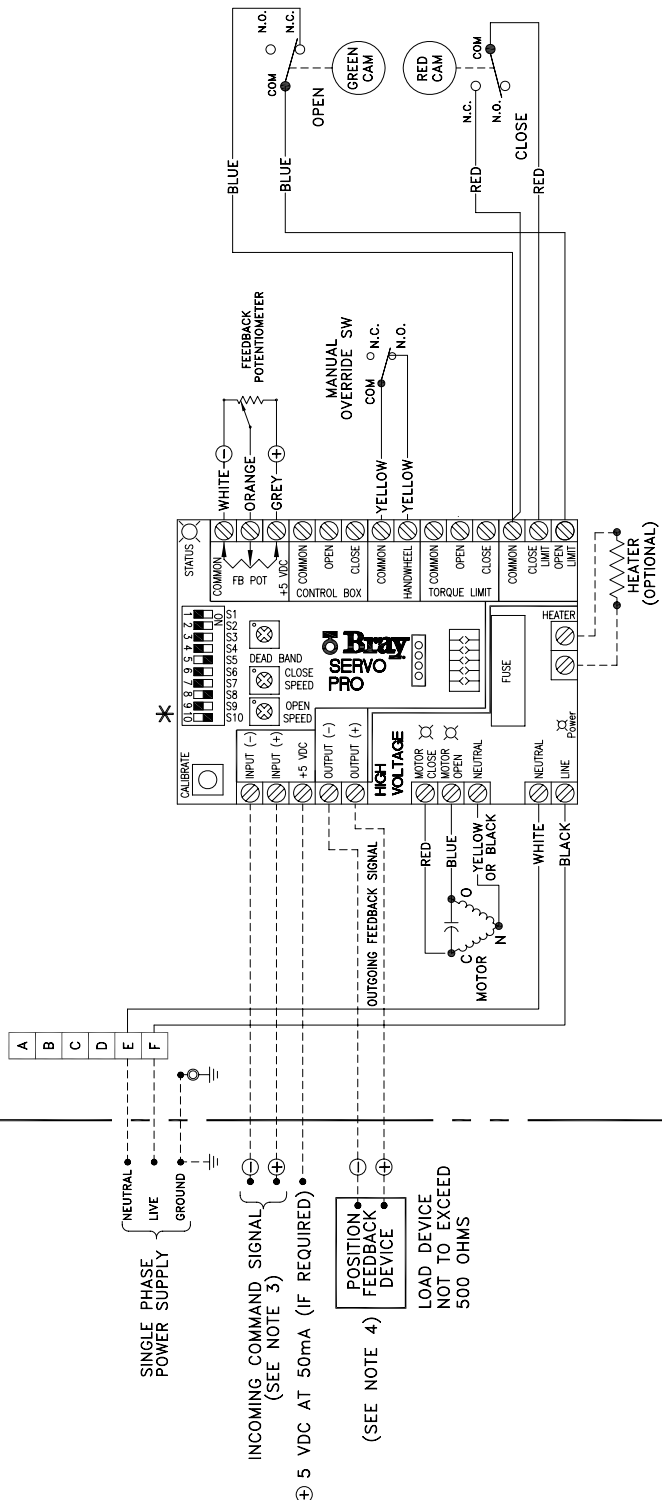


ACTUATOR

FIELD WIRING



- CALIBRATION SEQUENCE:**
1. SET TRAVEL LIMIT SWITCHES TO DESIRED END OF TRAVEL POSITIONS.
 2. CONNECT POWER SUPPLY.
 3. WITH ACTUATOR AT MID TRAVEL PRESS "CALIBRATE" BUTTON FOR TWO SECONDS.
 4. ACTUATOR WILL SELF-CALIBRATE.

* BEFORE MAKING CHANGES TO THE DIP SWITCHES, ENSURE THAT POWER IS OFF. SWITCHES SHOWN FOR 4-20mA INPUT AND OUTPUT, FAIL IN CLOSED POSITION UPON LOSS OF SIGNAL, AND FORWARD ACTING MODE. TORQUE SWITCH DISABLED

SWITCH	COMMAND INPUT		COMMAND OUTPUT		FORWARD/REVERSE ACTING		FAIL		TORQUE SWITCH		
	4-20mA	0-5V	4-20mA	0-5V	ACTING	REVERSE ACTING	ENABLE	CLOSE	OPEN	ENABLE	DISABLE
1	OFF	ON	ON	ON							
2	OFF	OFF	ON	ON							
3	OFF	OFF	OFF	ON							
4			OFF	ON							
5			ON	OFF							
6			OFF	ON							
7											
8								OFF	ON		
9								OFF	ON		
10								OFF	ON	OFF	ON

- NOTES:**
1. ACTUATOR SHOWN IN CLOSED POSITION.
 2. MANUAL OVERRIDE NOT ENGAGED.
 3. COMMAND SIGNAL AND FEEDBACK SIGNAL MUST BE ISOLATED FROM EACH OTHER AND ANY OTHER CIRCUITS.
 4. FEEDBACK LOOP IS POWERED BY THE SERVO, DO NOT SUPPLY EXTERNAL POWER.
 5. SEE MANUAL FOR DETAILS.
 6. HEATER OPTIONAL.
 7. TRAVEL LIMIT AND MANUAL OVERRIDE SWITCHES ARE SPDT (FORM C).
 8. SEE NAME TAG FOR POWER RATING.
- LIMIT SWITCH:**
 125/250VAC, 10A, 1/2 HP
 125/250VDC, 0.25A INDUCTIVE
 125/250VDC, 0.5A RESISTIVE
- TERMINAL STRIP:**
 14 - 22 AWG
 MAX TIGHTENING TORQUE 8 IN-LBS
 14-24 AWG FOR SERVO
 MAX TIGHTENING TORQUE 4 IN-LBS FOR SERVO
 105 °C, 300V MIN RATED WIRE

Valve Size _____ Pressure Rating _____
 Flg. Drilling _____
 Customer/Project _____
 Inq./P.O. No. _____
 Bray Order No. _____
 Certified Correct By _____ Date _____

FIELD WIRING DIAGRAM, SERIES 70 MODULATING
 WITH TYPE 'C' TRAVEL LIMIT SWITCHES,
 SERVO PRO "F" AND HEATER (OPTIONAL)



SHEET	REV.
1 OF 2	1
DRAWING NO.	
ES11A-0565	